

RHES Foundation Meeting
Monday, June 8, 2020
Planning for Funding 20-21

Playground Project

Approximate Cost of Project

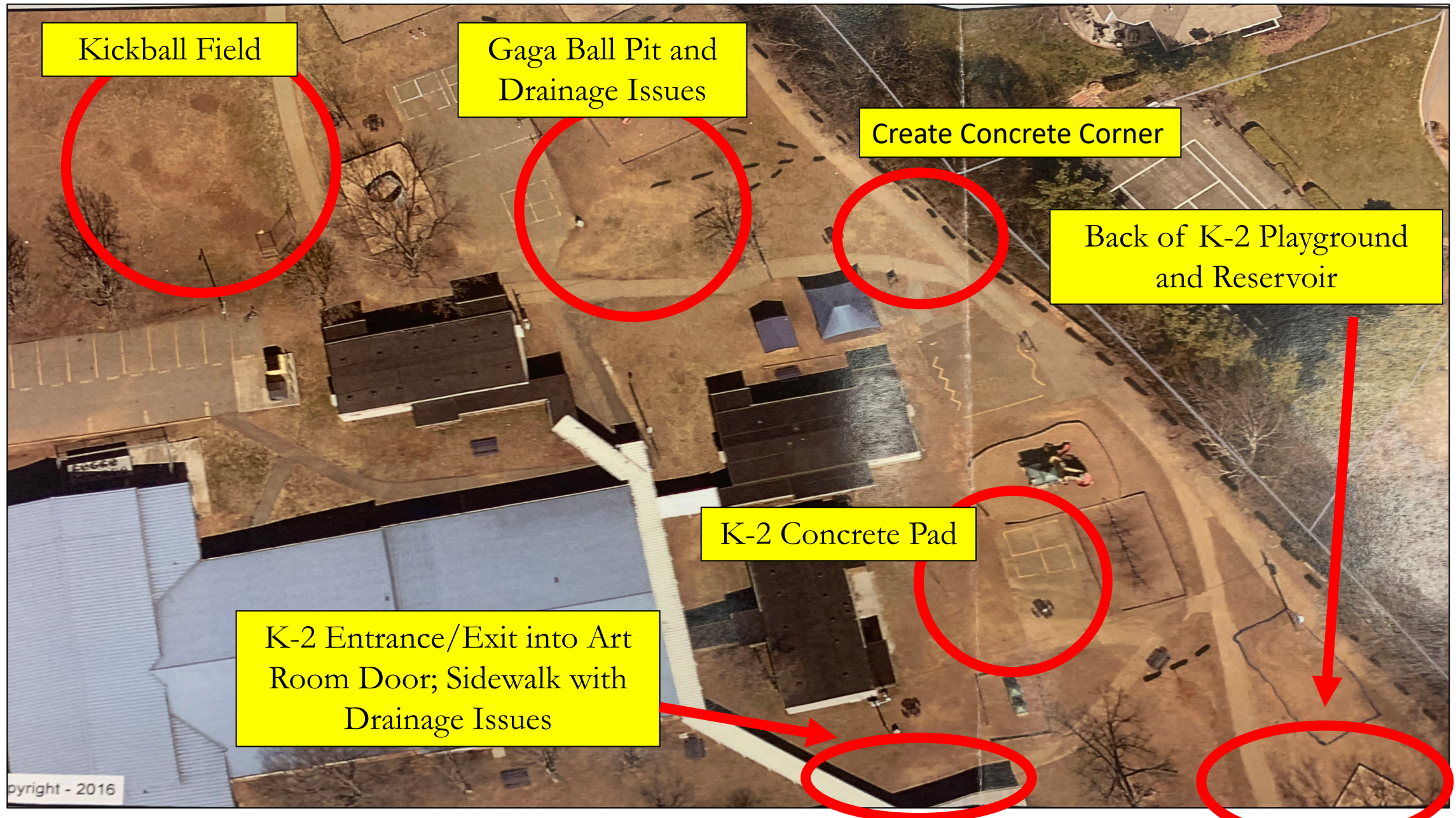
Researched and Presented by T. Holt, Principal

RHES Playground Project

Biggest Issues and Possibilities:

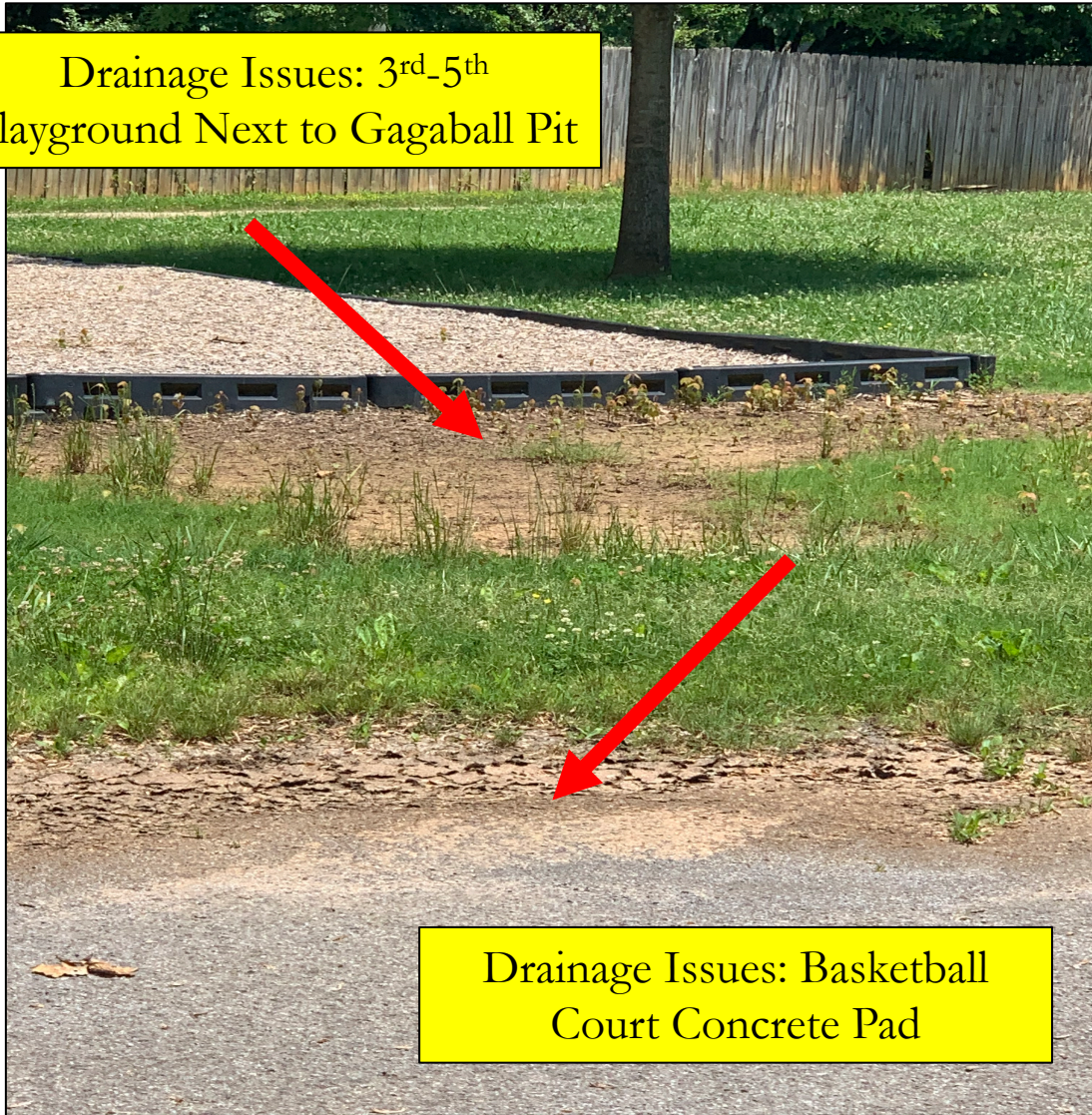
- Drainage on Playground Areas
- Turf Possibilities and Areas

RHES Playground Aerial View



Rocky Hill Elementary Playground

Drainage Issues: 3rd-5th
Playground Next to Gagaball Pit



Drainage Issues: Basketball
Court Concrete Pad

Drainage Issues: 3rd-5th
Playground Next to Gagaball Pit



Drainage Issues: Basketball
Court Concrete Pad

Rocky Hill Elementary Playground



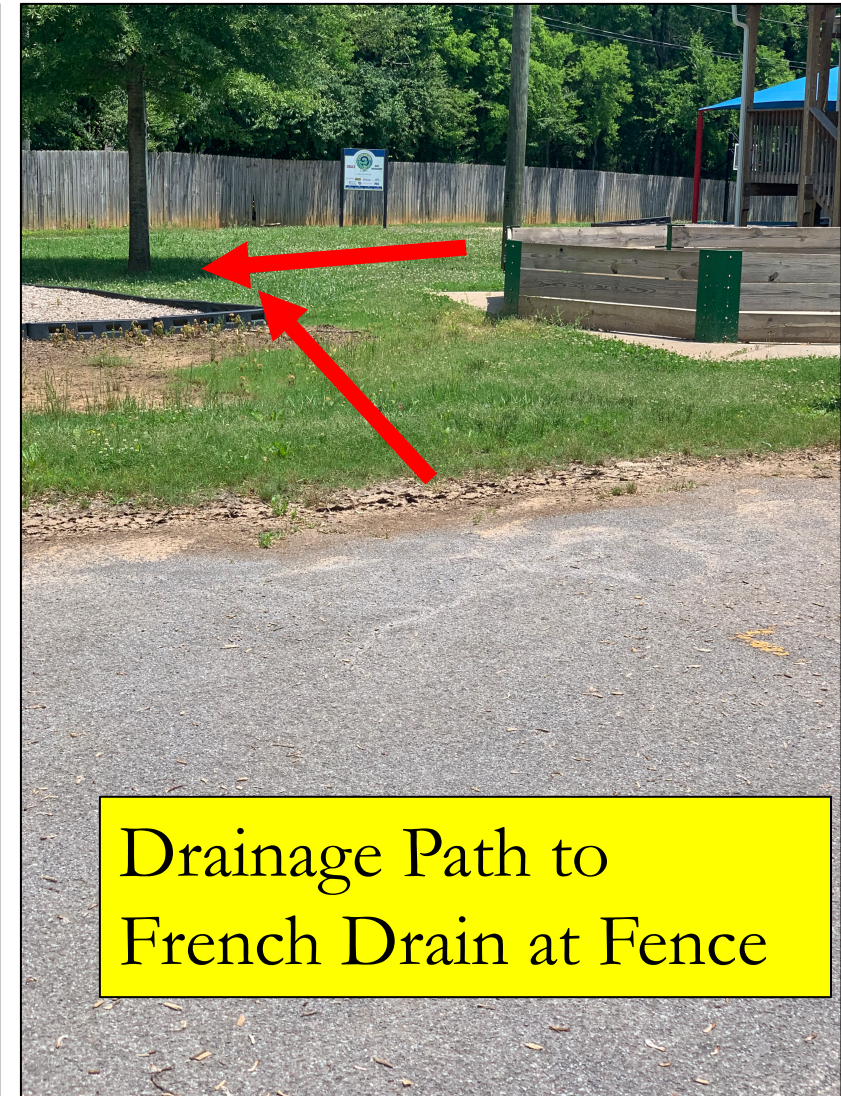
Gagaball Pit



Rocky Hill Elementary Playground



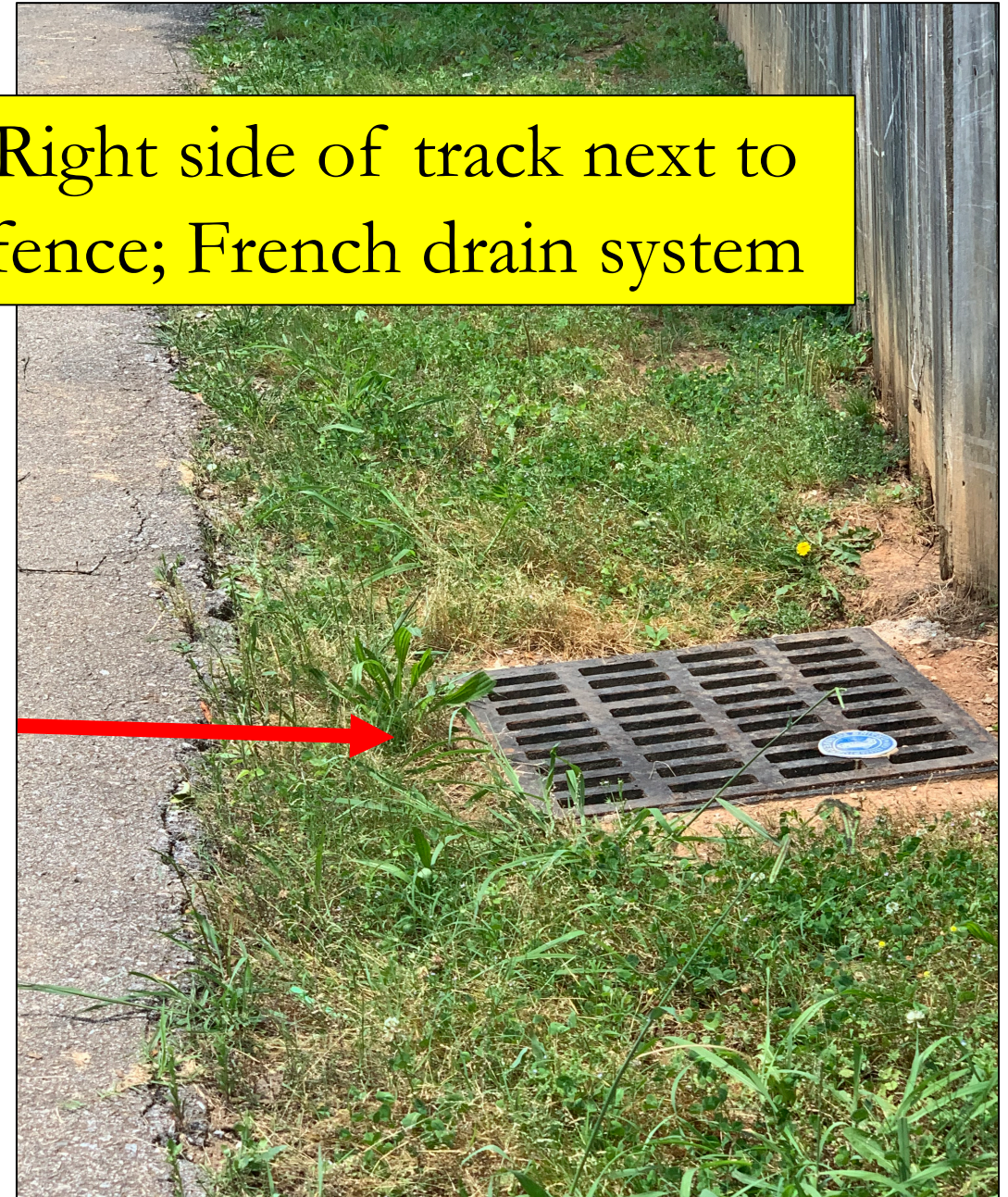
Rocky Hill Elementary Playground



3rd-5th Grade Playground Joined Drains to French Drain System at Fence



Right side of track next to
fence; French drain system



Rocky Hill Elementary Playground



Kickball Field 3rd-5th Grade Side – Drainage needed; turf installation would include the drainage and drain the water out into the open field

Rocky Hill Elementary Playground



Corner between K-2 and 3rd-5th Playground: heavy drainage issues that could be corrected by pouring concrete, not putting turf here. Water on side of Gagaball Pit contributes to this muddy area.

Rocky Hill Elementary Playground



Water draining from grassy hill toward fence and French drain system

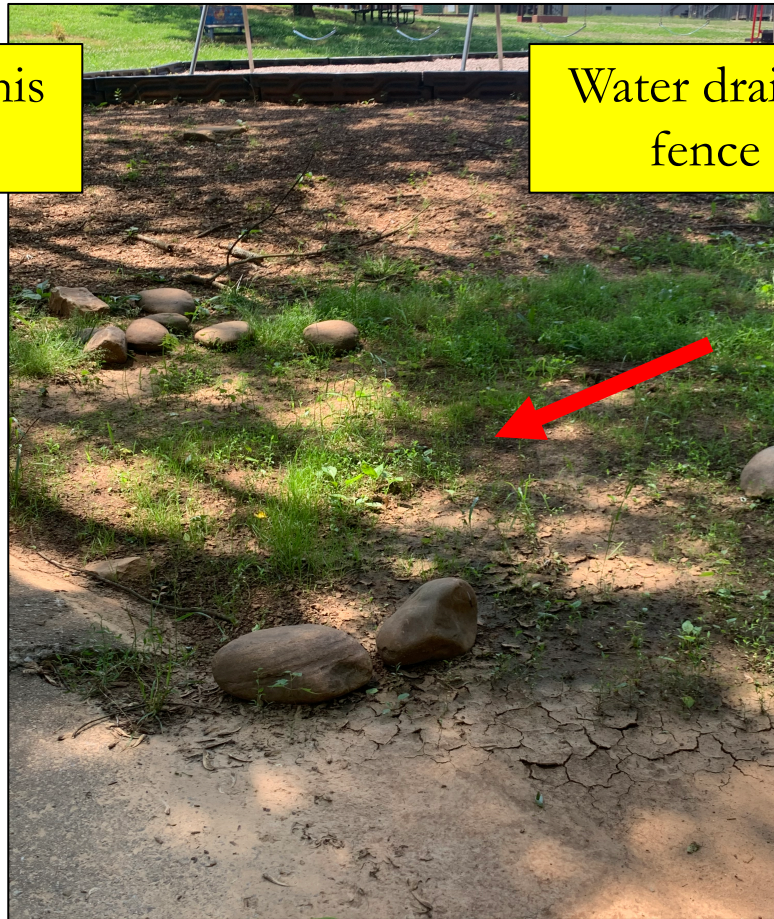
K-2 Playground Concrete Pad: already have a concrete pad with basketball goal; this area is an extra area that gets muddy when it rains; water drains downhill from portables

Rocky Hill Elementary Playground

Drains are spaced far apart in this stretch of K-2 track by fence



Water draining from grassy hill toward fence and French drain system



K-2 Backside of Playground at Corner of Track: water flows down from grassy hill and building; water also flows down the sides of the track (no drain grate) to the reservoir at fence.

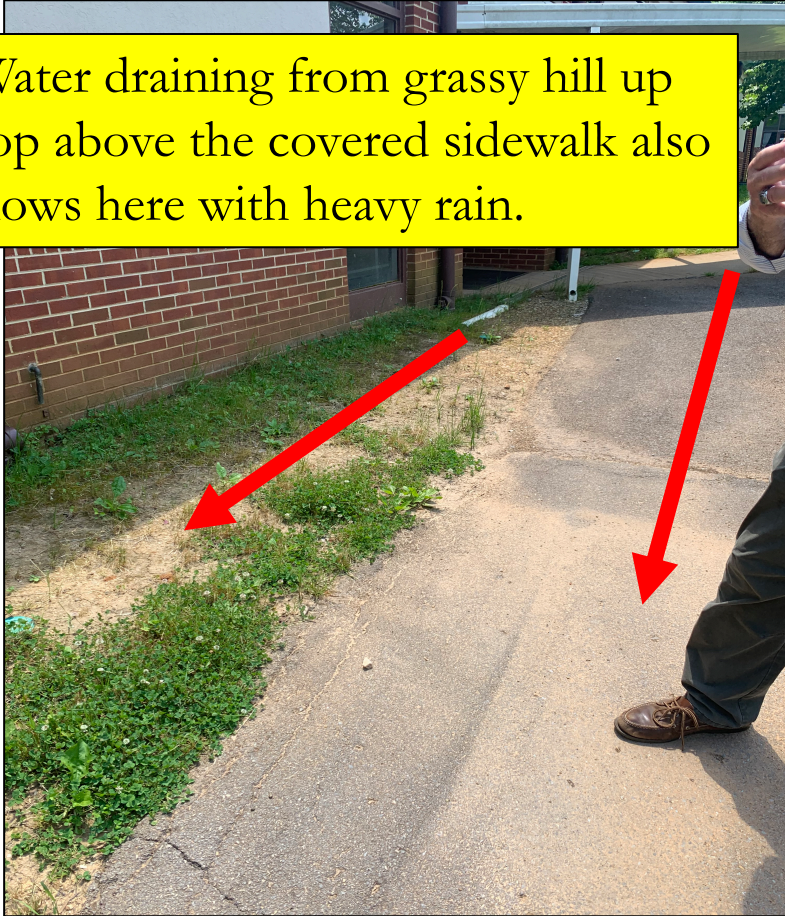
Rocky Hill Elementary Playground



K-2 Backside of Playground at Corner of Track: reservoir has two pipes showing the end of the French drain system; would tie all drainage pipes to this system

Rocky Hill Elementary Playground

Water draining from grassy hill up top above the covered sidewalk also flows here with heavy rain.



Slope down creates muddy areas on walkways and eventually lead to the reservoir.



K-2 Exit to Playground from School Building: Ss line up here to go inside; drainage of mud onto sidewalk is an issue; note the drain pipes that flow into the area and water from hill

Quotes for Projects at RHES

Project #1

- Gagaball Pit to have turf installed on the inside to cover concrete
- **Cost = \$3,200.00**

Project #2

- Kickball field to be excavated, drainage system installed, turf installed
- French drainage system out to the open field
- Keep bases
- Extend to behind home plate to the fence
- Turf on infield only
- **Cost = \$37,000.00**

Project #3

- Concrete pad on K-2 playground
- Tear up concrete, install gravel drainage system, install turf
- Tie drainage going down hill/sidewalks into French drain system along fence to reservoir
- **Cost = \$14,400.00**

Quotes for Projects at RHES

Project #4

- K-2 drainage issues at back corner of playground
- Back corner drainage leads to reservoir without any drain grates
- Is combination of water from hill, concrete pad and building entrance

- **Drainage System = \$2,267.00**

- Concrete corner between play areas to reduce mud issue
- **Concrete Cost = \$2,420.00**

Project #5

- K-2 drainage alongside building from building pipes at entrance and from above the sidewalk grassy hill area
- Install turf here and rework drainage and piping work
- **Cost = \$2,016.00**

All Playground
Projects
Completed =
\$61,703.00

- To be installed Summer 2021 once school closes
- KCS Maintenance Department will partner with *Baseline Sports Construction* for work on drainage improvements