

Middle School Rezoning

Due to New Hardin Valley Middle School

Fall, 2016

Excellence for Every Child

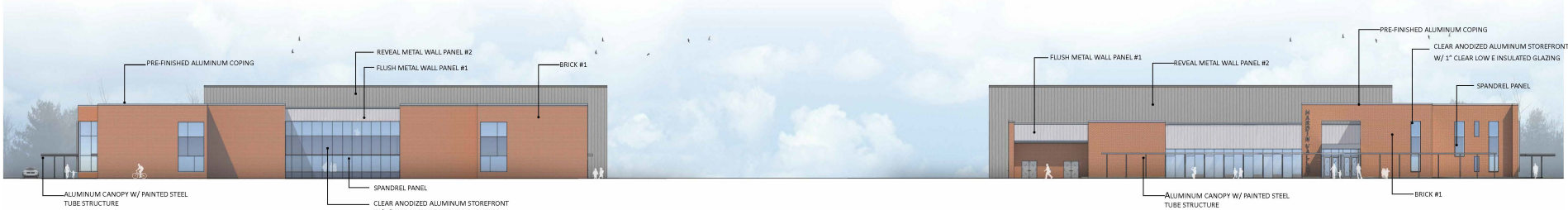
Introduction

- Construction of new middle schools in the Hardin Valley and Gibbs communities is currently underway
- The schools will open in August 2018. Gibbs will have a capacity of 600 students and Hardin Valley will have a capacity of 1200 students.
- The schools are intended to accommodate recent and future population growth in west Knox County and provide the Gibbs community with a school in close proximity to the center of that community.
- The Hardin Valley school will help relieve crowding at a number of other schools in west Knox County
- The Board of Education must create a zone for each of the new schools which will require some re-zoning from a number of existing schools





NORTH ELEVATION



EAST ELEVATION

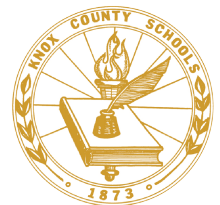
WEST ELEVATION



SOUTH ELEVATION

Zone Planning and Development

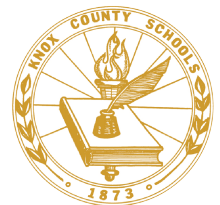
- Knox County Metropolitan Planning Commission:
 - Collects data on, births, building permits
 - Provides population forecast for Knox County
- The Knox County Schools:
 - Develops enrollment forecasts using current enrollment trends and computer models
 - Designs and recommends school attendance zones to the Board of Education
 - Will develop and recommend a middle school zones to the Board of Education by May 2017
- Zoning Considerations:
 - School Capacity
 - Transportation
 - Parent Responsibility Zones
 - Geographic and man-made obstacles
 - Congruent middle and high school boundaries



Zone Planning and Development (cont'd)

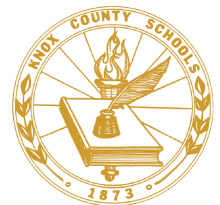
■ Timeline:

- November 2016/ January 2017: Gather input from community
- December 2016/ February 2017: Formulate a tentative zoning plan
- March/April 2017: Invite community feedback on plan
- May 2017: Elementary rezoning recommendation and vote by the Board of Education

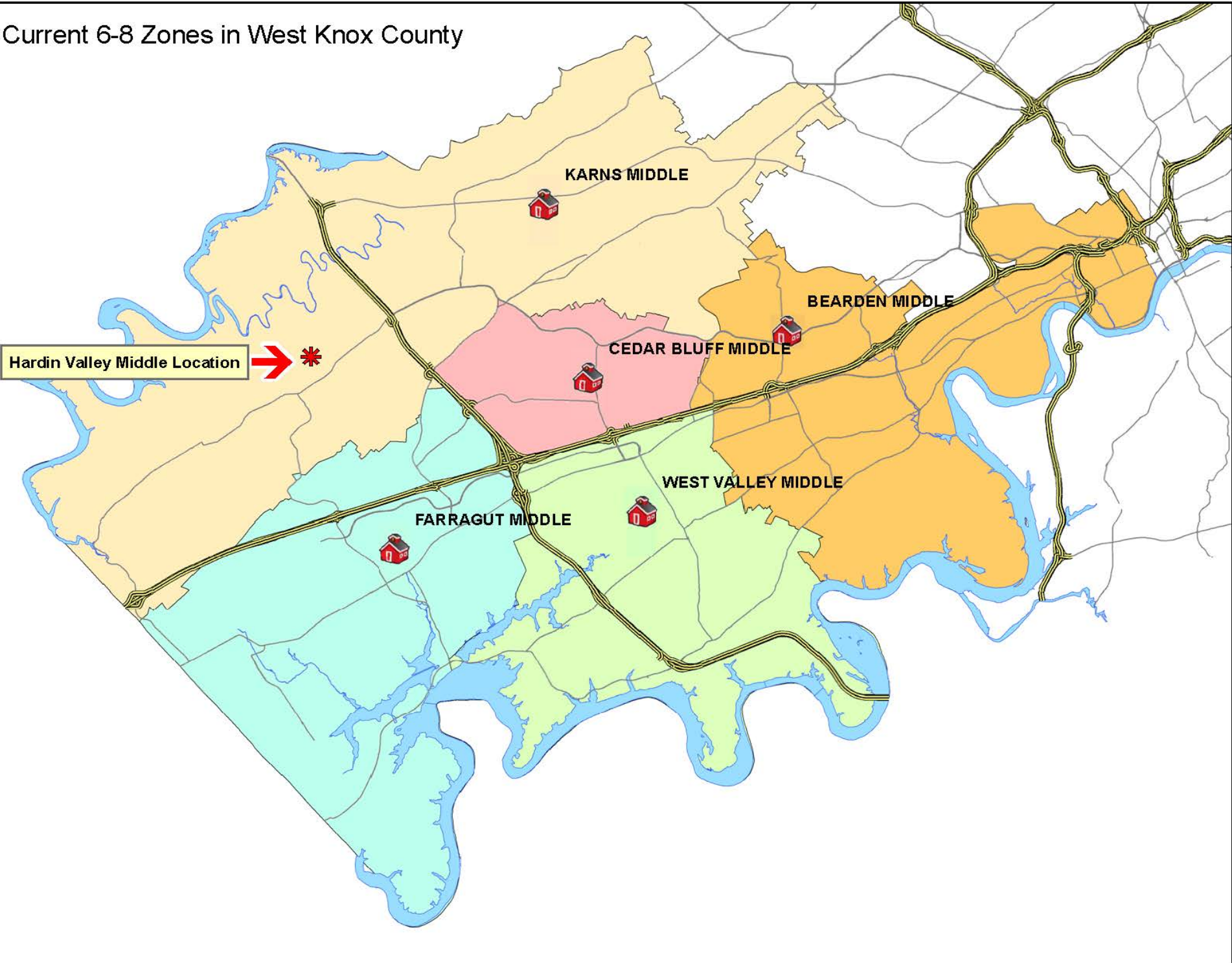


West Knox Middle School Zoning

- Enrollment and growth challenges at several west Knox County Middle Schools
- New zoning plan should address growth in multiple school zones
- School zones potentially affected include Farragut, West Valley, Bearden, Karns and Cedar Bluff Middle Schools.
- Given the location of the new school, it appears that the Farragut and Karns attendance zones may change significantly.



Current 6-8 Zones in West Knox County



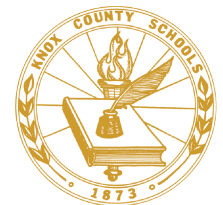
Enrollment

August 2016 Actual
(As of 9/07/16)

SCHOOL	CAPACITY	ENROLLMENT
KARNS	1200	1451
FARRAGUT	1200	1444
WEST VALLEY	1250	1211
CEDAR BLUFF	550	596
BEARDEN	1200	1214
TOTAL		5916

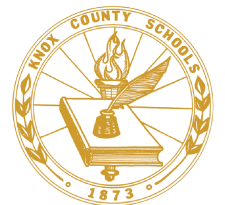
August 2018
Approximate Desired

SCHOOL	
KARNS	1100
FARRAGUT	1100
WEST VALLEY	1100
CEDAR BLUFF	550
BEARDEN	1050
HARDIN VALLEY	1000
TOTAL	5900



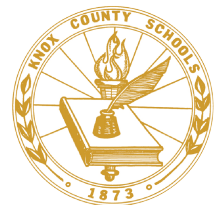
Likely Dynamics

- Area immediately surrounding the new Hardin Valley Middle School and bordered by Pellissippi Parkway and Interstate 140 would likely be zoned to the new school.
- Enrollment in other western Knox County Middle schools would likely shift south and east, as the new school creates additional capacity.



Other Considerations

- Timing: New middle school scheduled to open fall 2018
- Structure: should the new school open with all grades, or grow into all grades?
- Assignment: Should some students (rising 8th graders, for example) be “grandfathered” to their current school?
- Community: how to quickly develop a cohesive, constructive school community that will support student academic success?



Next steps

Parent and Community Input is Important

Questions, feedback, concerns?

Email us at

rezoning@knoxschools.org

Additional resources:

Updates posted at knoxschools.org

