



# WHMS News



Monday, February 13

A Day Schedule

-----





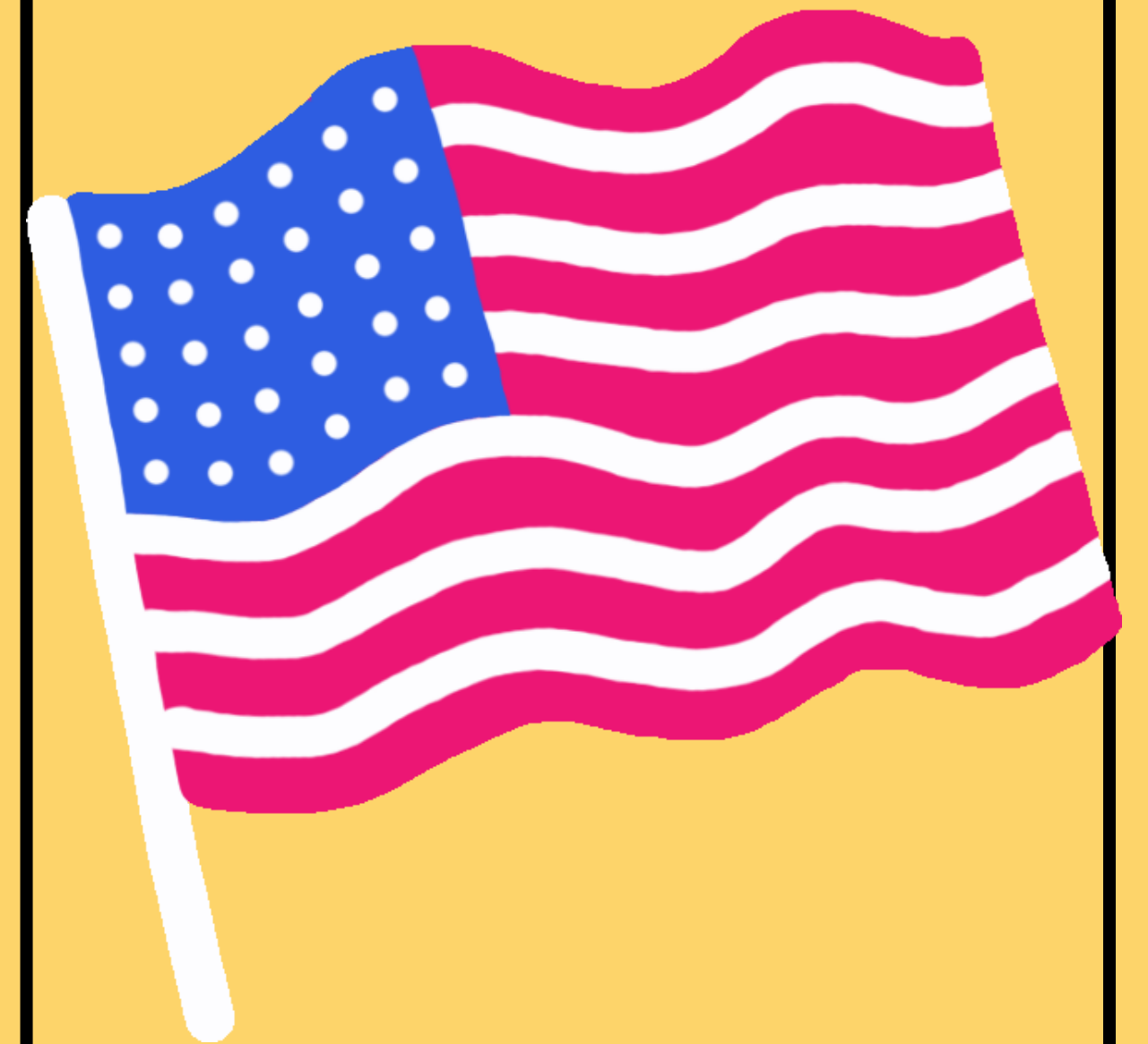
# PLEDGE OF ALLEGIANCE

---

I pledge allegiance to the  
Flag of the United States of  
America, and to the  
Republic for which it  
stands, one Nation under  
God, indivisible, with liberty  
and justice for all.

---

**Moment of Silence**





# **SNOW CONES DURING LUNCH**



Beta Club will be selling  
snow cones during lunch  
tomorrow for \$2.

# **Track Team 2022-23**

Practices will be Monday,  
Tuesday, and Thursday from  
3:45-5:00 starting Monday,  
2/13.

There will have a mandatory  
parent meeting next week.

## **STUDENT LIFE**

---

**Athletics**

**Clubs and Activities**

**Performance Arts**

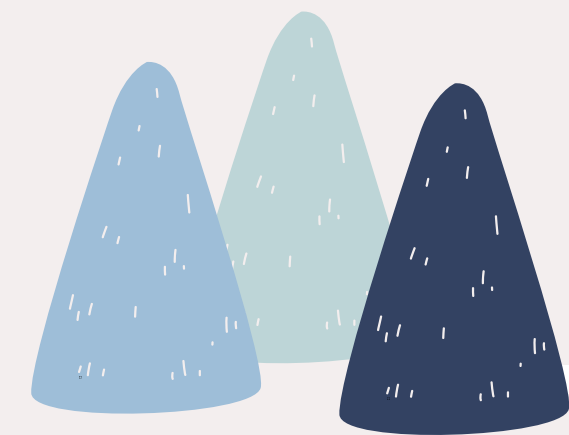
**Visual Art**

# **WINTER WONDERLAND DANCE**

**When: Friday, 2/17 from 5:30-7:30**

*Winter  
Wonderland*

**Cost \$5**



**Tickets are on sale from 8:00-8:25 in the  
front office lobby.**

# BRIGHTBYTES STUDENT SURVEY

The BrightBytes Student Survey needs to be completed by Tuesday, February 14 during advisory time.

The screenshot shows a web interface for the BrightBytes Student Survey. On the left is a dark sidebar with the KCS (Knox County Schools) logo at the top. Below the logo are icons and labels for 'Account', 'Admin', 'Dashboard' (highlighted in blue), 'Courses', 'Calendar', 'Inbox' (with a '209' notification bubble), 'History', 'Commons', 'Mastery' (with a '10' notification bubble), and 'Halls Middle School'. The main content area has a white background. At the top, it says 'For Students ONLY: BrightBytes Survey' with a close button (X) in the top right. Below this is the 'BrightBytes' logo, which consists of a stylized 'B' made of two overlapping circles (one blue, one yellow) followed by the text 'BrightBytes' in blue with a registered trademark symbol. An information icon (i) is to the left of a paragraph of text: 'Knox County Schools is partnering with BrightBytes, an educational research organization, to learn more about your technology access and use for learning as a student. Student participation is essential in helping the district form a more complete picture of technology use for learning in our students' lives. The last day to complete this questionnaire is **February 14**. Please wait until the educators at your school instruct you to take the survey found at this link.' Below the text is a link for 'Halls Middle School: <http://www.bbyt.es/AM3KM>' with an external link icon. At the bottom of the message box, it says 'This is a message from HALLS MIDDLE SCHOOL'. Below the message box is a 'Dashboard' section with a vertical ellipsis menu icon. Under 'Dashboard' is a section titled 'Published Courses (15)'. Below this are three course cards. The first card has a red and white checkered background and the text 'HMS Student' with a green three-dot menu icon. The second card has a red background with a white stylized 'H' and the text 'Dr. Bennett 7th Grade' and 'Math Intervention' with a red three-dot menu icon. The third card has a dark background with a yellow and red circular logo that says 'NATIONAL CONVENTION' and 'NATIONAL B' with an orange three-dot menu icon.

KCS  
KNOX COUNTY SCHOOLS

Account  
Admin  
Dashboard  
Courses  
Calendar  
Inbox 209  
History  
Commons  
Mastery 10

For Students ONLY: BrightBytes Survey

**BrightBytes®**

Knox County Schools is partnering with BrightBytes, an educational research organization, to learn more about your technology access and use for learning as a student. Student participation is essential in helping the district form a more complete picture of technology use for learning in our students' lives. The last day to complete this questionnaire is **February 14**. Please wait until the educators at your school instruct you to take the survey found at this link.

Halls Middle School: <http://www.bbyt.es/AM3KM>

This is a message from HALLS MIDDLE SCHOOL

Dashboard

Published Courses (15)

HMS Student

Dr. Bennett  
7th Grade

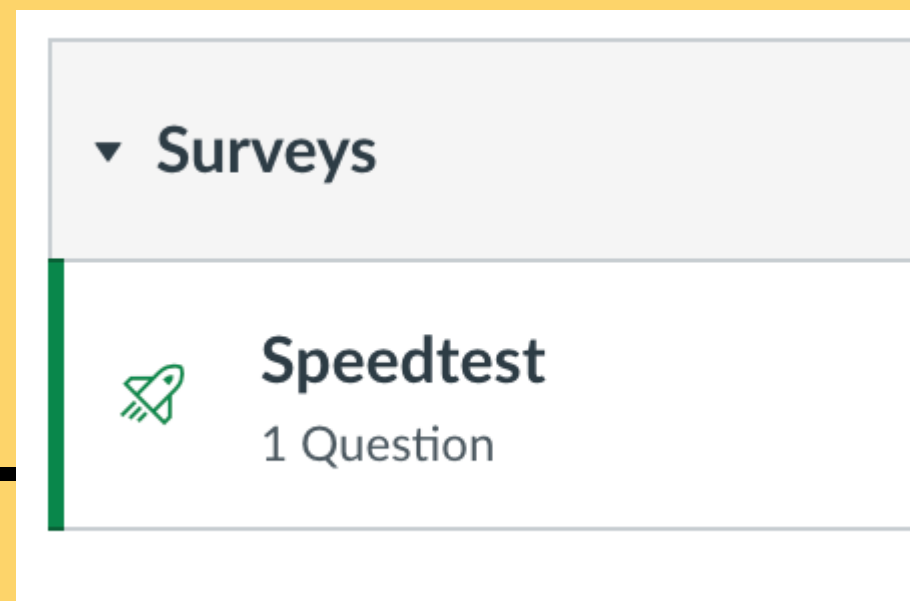
Math  
Intervention

NATIONAL CONVENTION  
NATIONAL B

# BRIGHTBYTES STUDENT SURVEY

There is also a Quiz on the HMS Student Canvas Page. **The quiz MUST be completed at home.** Complete the internet Speedtest and then type your name and Submit the survey.

Go to the Student Canvas course, click Quizzes, and then Speedtest assignment. Follow the directions.





# early Release Wednesday

Students will dismiss at 1:30PM on Wednesday, 2/15. If you are a car rider, make sure your ride knows school is out at 1:30.



Students are encouraged to dress up in 20's attire.





# SPIRIT STORE CASH SALES

The Spirit Store will be  
**OPEN** this week.

Tuesday - 8th grade  
Wednesday - 7th grade  
Thursday - 6th grade

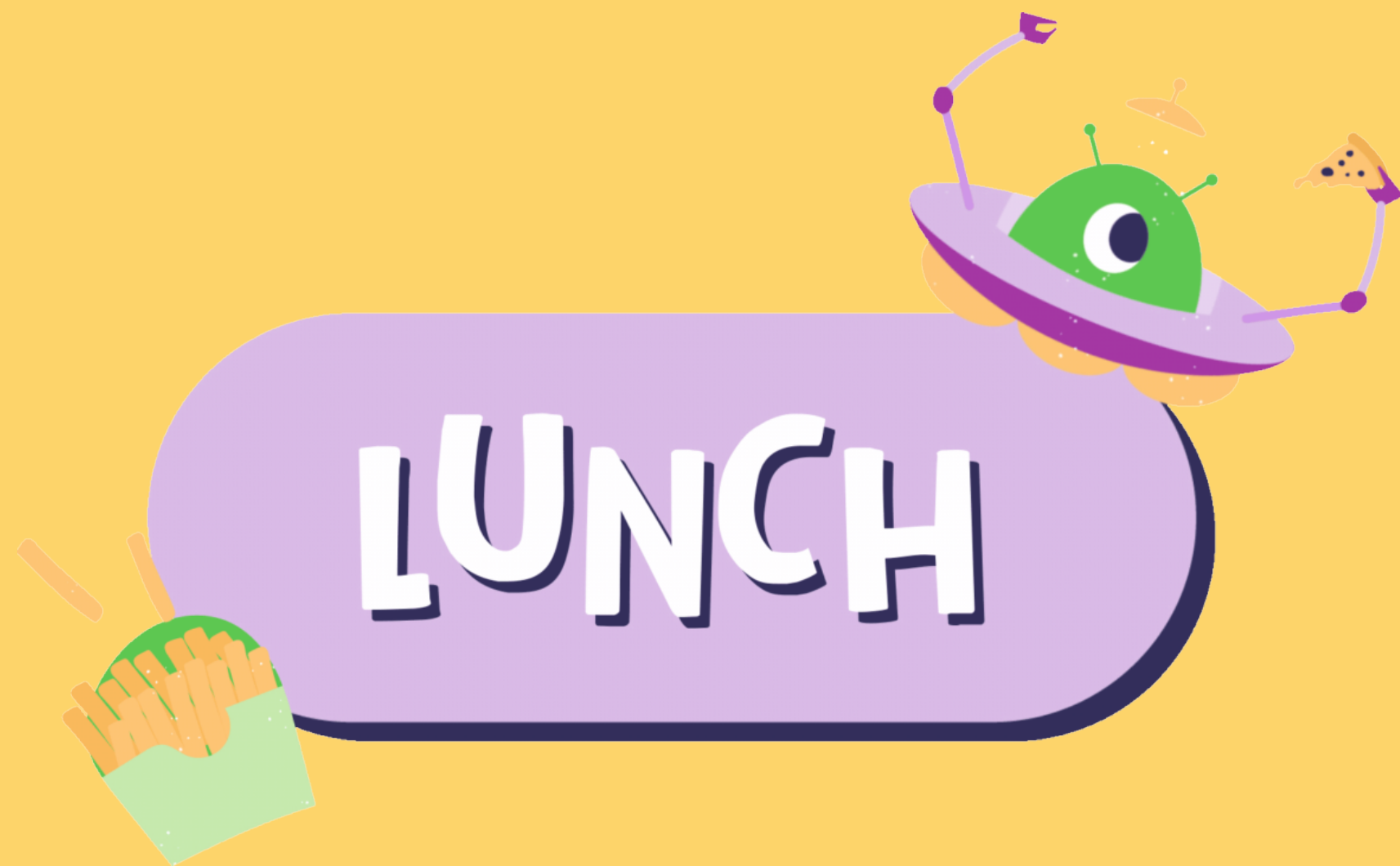


# **LOANER CHROMEBOOKS**



There will be NO LOANER Chromebooks today. Make sure you bring your Chromebook to school fully charged. Otherwise, call/text someone to bring it!





Know your  
student ID  
number!

**February 13<sup>th</sup>**

**Choose 1 Entrée**

Big Daddy's Cheese or Pepperoni Pizza  
(42)

8 WG Chicken Nuggets (32) w/ WG Roll  
(32)

WG Uncrustable PBJ (31) w/ Cheez-Its  
(14) & Cheese stick (1)

**Side Item**

Mashed Potatoes (17) w/ or w/o gravy (4)  
Sweet Yellow Corn (15)  
Garden Salad (2)  
Baby Carrots (5)

# **IT'S WHAT WE DO HERE**



**Serve  
others & Strive for  
greatness**

**In all that  
you do.**

