

# Middle School Rezoning

Due to New Hardin Valley Middle School

Winter, 2017

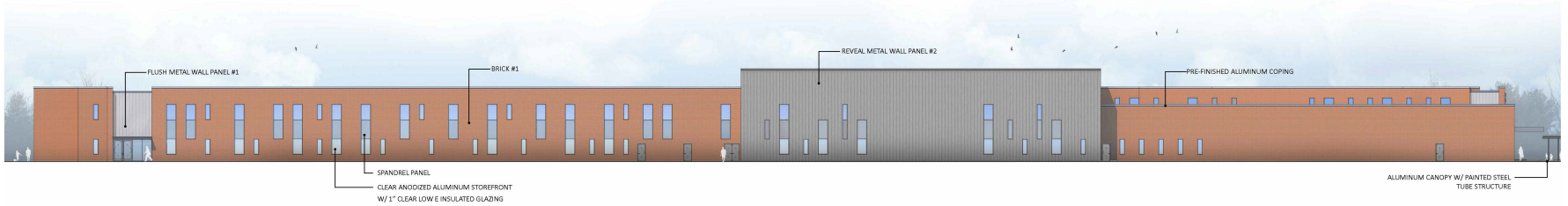
*Excellence for Every Child*

# Introduction

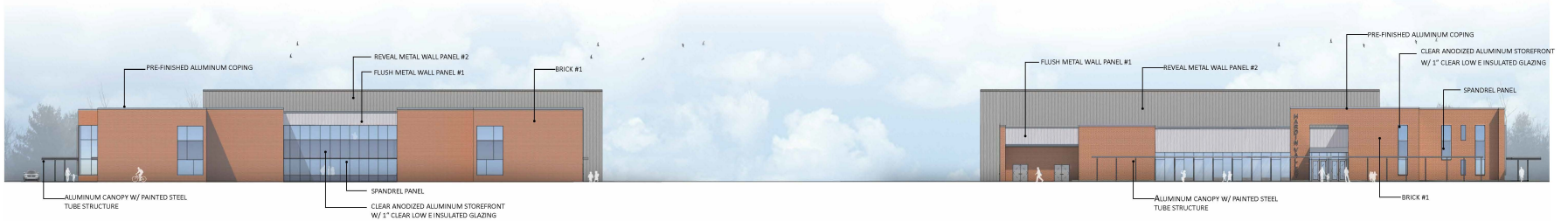
---

- Construction of new middle schools in the Hardin Valley and Gibbs communities is currently underway
- The schools will open in August 2018. Gibbs will have a capacity of 600 students and Hardin Valley will have a capacity of 1200 students.
- The schools are intended to accommodate recent and future population growth in west Knox County and provide the Gibbs community with a school in close proximity to the center of that community.
- The Hardin Valley school will help relieve crowding at a number of other schools in west Knox County
- The Board of Education must create a zone for each of the new schools which will require some re-zoning from a number of existing schools





**NORTH ELEVATION**



**EAST ELEVATION**

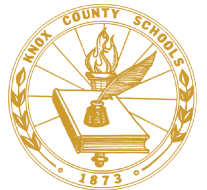
**WEST ELEVATION**



**SOUTH ELEVATION**

# Zone Planning and Development

- Knox County Metropolitan Planning Commission:
  - Collects data on, births, building permits
  - Provides population forecast for Knox County
- The Knox County Schools:
  - Develops enrollment forecasts using current enrollment trends and computer models
  - Designs and recommends school attendance zones to the Board of Education
  - Will develop and recommend a middle school zones to the Board of Education by May 2017
- Zoning Considerations:
  - School Capacity
  - Transportation
  - Parent Responsibility Zones
  - Geographic and man-made obstacles
  - Congruent middle and high school boundaries

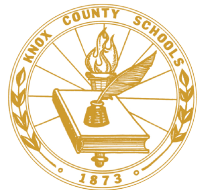


# Zone Planning and Development (cont'd)

---

## ■ Timeline:

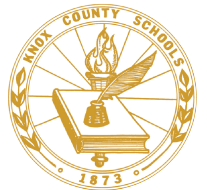
- November 2016/ January 2017: Gather input from community
- December 2016/ February 2017: Formulate a tentative zoning plan
- March/April 2017: Invite community feedback on plan
- May 2017: Elementary rezoning recommendation and vote by the Board of Education



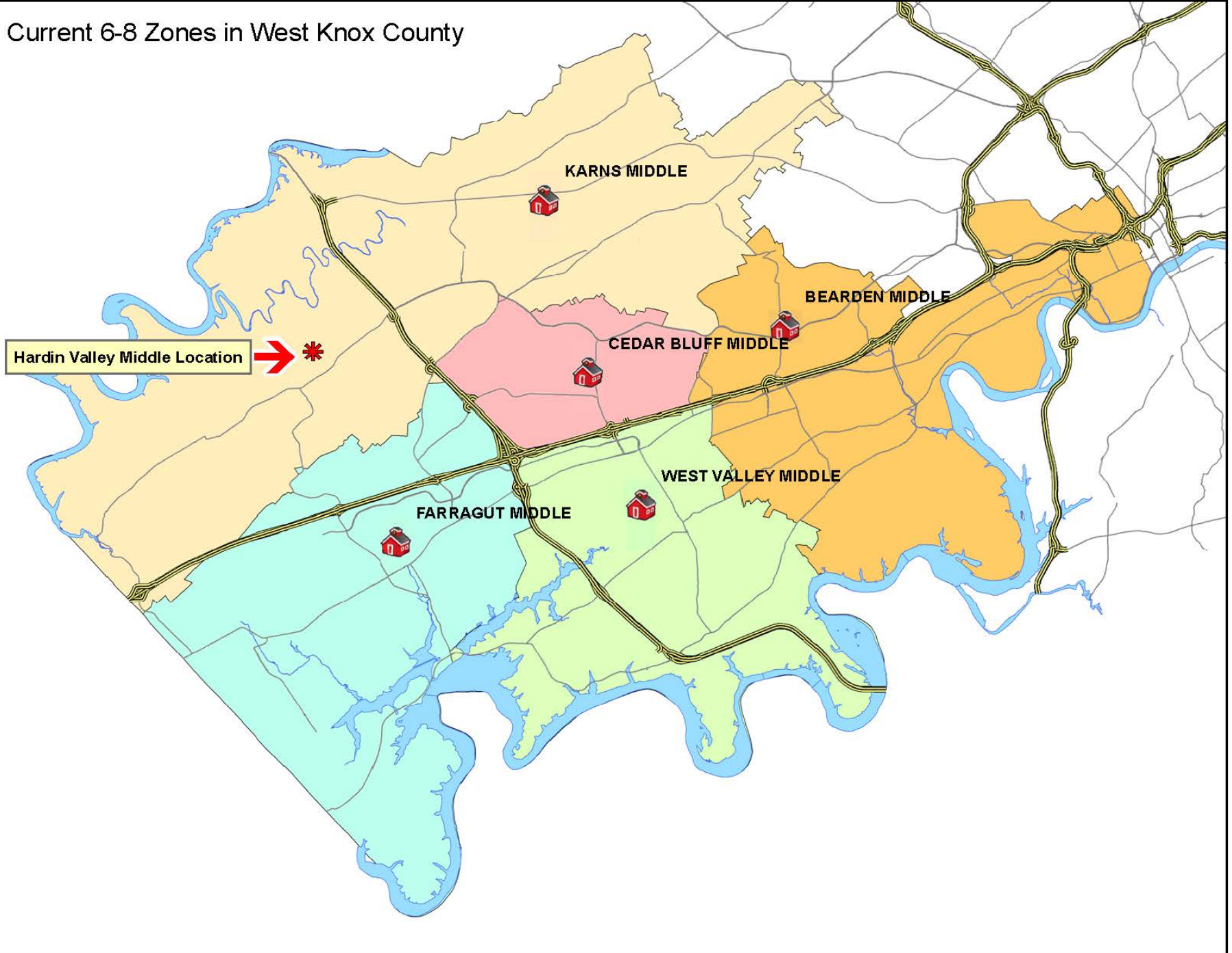
# West Knox Middle School Zoning

---

- Enrollment and growth challenges at several west Knox County Middle Schools
- New zoning plan should address growth in multiple school zones
- School zones potentially affected include Farragut, West Valley, Bearden, Karns and Cedar Bluff Middle Schools.
- Given the location of the new school, it appears that the Farragut and Karns attendance zones may change significantly.



# Current 6-8 Zones in West Knox County



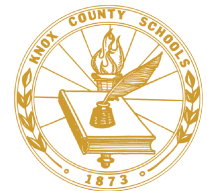
# Enrollment

August 2016 Actual  
(As of 9/07/16)

August 2018  
Approximate Desired

SCHOOL	CAPACITY	ENROLLMENT
KARNS	1200	1451
FARRAGUT	1200	1444
WEST VALLEY	1250	1211
CEDAR BLUFF	550	596
BEARDEN	1200	1214
<b>TOTAL</b>		<b>5916</b>

SCHOOL	
KARNS	1100
FARRAGUT	1100
WEST VALLEY	1100
CEDAR BLUFF	550
BEARDEN	1050
HARDIN VALLEY	1000
<b>TOTAL</b>	<b>5900</b>

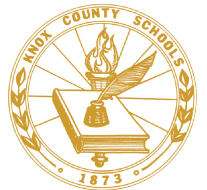




# Likely Dynamics

---

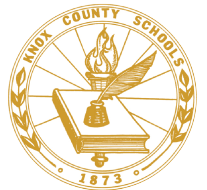
- Area immediately surrounding the new Hardin Valley Middle School and bordered by Pellissippi Parkway and Interstate I-40/75 would likely be zoned to the new school.
- Enrollment in other western Knox County Middle schools would likely shift south and east, as the new school creates additional capacity.



# Other Considerations

---

- Timing: New middle school scheduled to open fall 2018
- Structure: should the new school open with all grades, or grow into all grades?
- Assignment: Should some students (rising 8<sup>th</sup> graders, for example) be “grandfathered” to their current school?
- Community: how to quickly develop a cohesive, constructive school community that will support student academic success?



# Next steps

---

## ***Parent and Community Input is Important***

Questions, feedback, concerns?

**Additional resources:**

**[rezoning@knoxschools.org](mailto:rezoning@knoxschools.org)**

Updates posted at [knoxschools.org](http://knoxschools.org)

